

ZONAR[®]

Vocational Transportation Management



Working smarter starts with data.

Optimize asset utilization. Right-size your core fleet. Enhance safety and compliance. Identify and target inefficiencies across the fleet. Start by using a modern smart fleet solution built to track every on- and off-highway asset you have, on one platform.

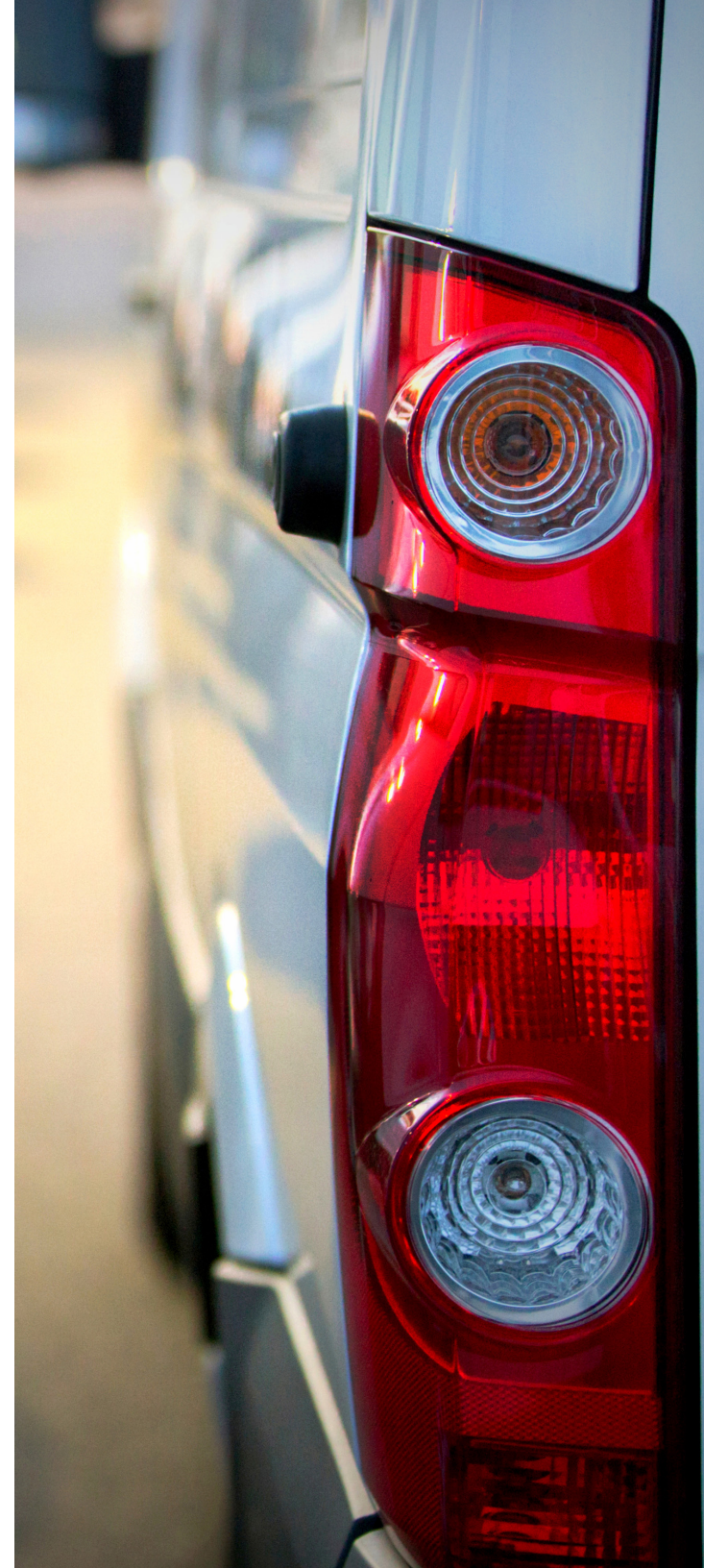
Vocational fleets work hard, in harsh environments, through inclement weather, day or night. Equip your fleet with modern, innovative smart fleet management solutions by an industry leader who understands your real-world challenges, big and small.

Know where every asset is, what it's doing, how it's performing—and if you can deploy it elsewhere. Prevent unplanned downtime and save thousands in critical repair costs through proactive and predictive remote diagnostics, as well as electronic inspection reporting. Track data and trends in utilization to determine if you have the assets needed to make new commitments. All on a single, mobile-friendly platform that puts fleet data at your fingertips—even when you're in the field.

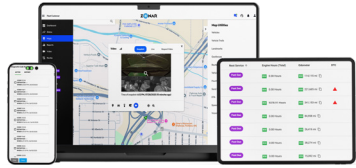
Round-the-clock support, on us.

If you need help, call our support professionals 24/7/365, including weekends and holidays. Email us for a response and resolution within 2 business days. And chat with us online for a solution within 4 hours.

No charge.



Equip your fleet to work smarter, from its data up.



Zonar Ignition™

Drive data-based decisions with detailed visibility. Monitor and manage your entire fleet of on- and off-highway assets online, on your desktop, tablet and smartphone.



Zonar V4™ TCU

Track each asset's location, performance and health in real time. See where and when every start, stop, turn, brake, idle and PTO event occurs, as it occurs.



Zonar Logs™

Accurately and easily track on-highway Hours-of-Service (HoS) for greater compliance. Reduce violations and manage hours online—even for operators that cross the U.S.-Canada border.



Operator tablets

Expand your fleet's capabilities and streamline daily tasks, including inspections. All with a library of Zonar and trusted third-party mobile apps that digitize workflows.



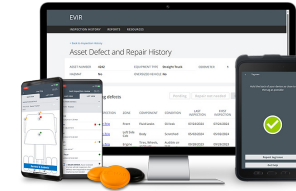
Zonar ZTrak®

Track assets wherever they roam, including into extreme temperatures, rain, sleet and snow. Ideal for assets deployed over long periods.



Zonar Coach™

Build a safer fleet with safer operators and drivers using a complete safety solution—or just our standalone dashcams. And protect your fleet from false claims with on-demand footage.



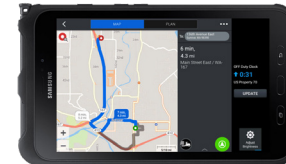
EVIR®

Electronically verify that every required walkaround inspection is performed properly. Comply with DOT, OSHA and MSHA regulations. Available on tablets and smartphones.



Zonar LD™

See inside your entire fleet. Effortlessly install by plugging it into the light-duty vehicle's OBD II port, and track location, usage, idling, PTO and speed. No effort, no downtime.



Advanced Navigation

Parking, breaks, meals—equip operators to plan their best route, on their tablet. Even down to their available hours before reaching HoS limits.

Electronically verify every inspection.

Electronically verify every inspection.

One pencil-whipped miss can cause an accident, incur a violation, and boost your insurance rates. Use our electronic verified inspection reporting (EVIR) system to make sure each required inspection is performed correctly, and the results are captured accurately.

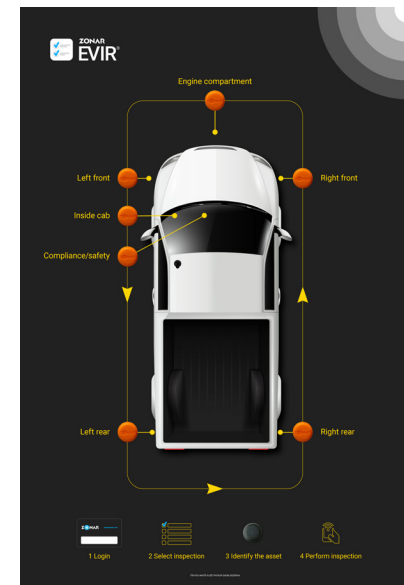
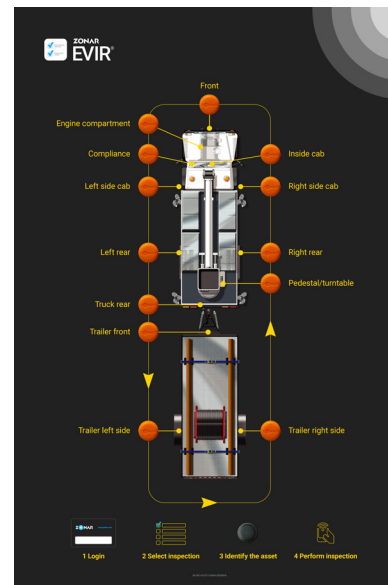
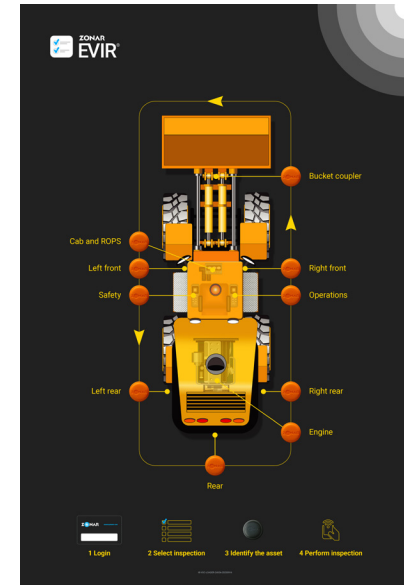
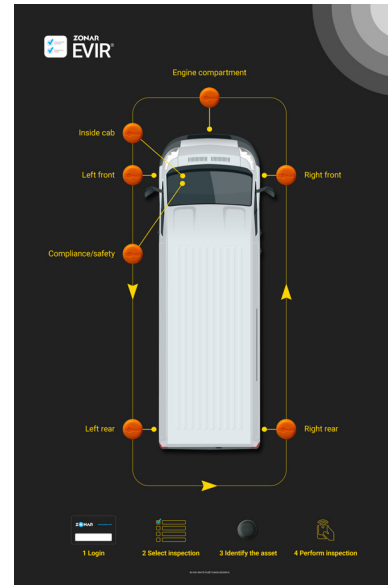
- Place a Zonar tag on each inspection zone of the vehicle or piece of heavy equipment.
- Operators must physically scan each tag when they inspect that zone's components.
- As they perform the inspection, they mark defects, add notes and capture photos.
- When the inspection is complete, the results are uploaded to Zonar Ignition.

Operators can also use the downloadable EVIR app on their tablets and smartphones to inspect tagged and tagless, temporary items such as rental or leased equipment or vehicles. Available on the Google Play Store and Apple App Store.

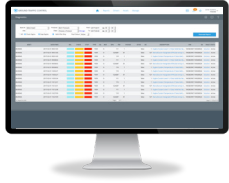
Takes half the time of paper-based inspections.

Integrate with your maintenance platform for more uptime.

Integrate EVIR inspection reports with your maintenance platform so major defects are prioritized and addressed sooner, not later. Faster reporting, prioritization and resolution—together, they deliver more uptime. And with fewer human errors.



Make high performance standard.



Remote diagnostics

Access fleet health reports in Ignition for the data to keep each fleet asset in safe, peak condition.



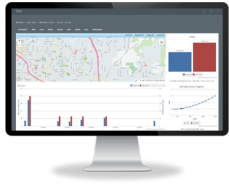
Leading OEM partnerships

Drive down your TCO with factory-installed telematics devices and remote diagnostics data collection, from the start—as the vehicle leaves the factory. Rich data, deeper insights, longer-running vehicles.



ContiConnect Live Integrated

Monitor each tire's pressure online, regardless of the vehicle's location. Keep each tire healthy to save fuel, enhance safety and increase your ROI through a longer lifespan.



Zonar ZFuel™

Find opportunities to run more efficiently on less fuel. Look at more than just MPG to view real-world usage, even in harsh environments. Protect against excessive idling and fuel theft.



Zonar FaultIQ®

Predict and prevent downstream issues to save thousands in critical repair costs. Decode faults into plain speak, see all fault data, and receive expert guidance. All vehicle makes, models and major components—on one screen.



Zonar SightIQ™

Using ISO standards (AEMP 2.0), turn cross-site asset data into actionable insights. View diagnostics, performance and KPIs such as cycle times, crusher volume and load counts per hour.

Turn data into your edge with custom reports.

Instead of spending resources analyzing, exporting and building reports on your own, work with us to create a custom data visualization in Microsoft® PowerBI to fit your specific needs.

Know your fleet better than your competitors know theirs. And make more informed moves.



Prioritize proactive fleet health.



Save thousands in critical repair costs.

Zonar FaultIQ®

Zonar FaultIQ, powered by Noregon, is an all make, all model, all component diagnostic software for predicting faults before they happen. Decode faults quickly, and prioritize and schedule repairs to keep medium- and heavy-duty vehicles rolling, longer.

- See a snapshot of your entire fleet on a single dashboard.
- Monitor Health and Safety Scores for each vehicle, color-coded based on severity.
- Trust recommended action plans based on input from ASE-certified technicians.

Need an off-the-shelf solution? Let's build it.

API integrations

Vocational fleets are mixed, purpose built and sophisticated. If you need additional insights not currently available in our off-the-shelf solutions, let's put our heads together to extend our platform and optimize your operations. Work with our in-house development experts to develop custom reports, real-time data streams and customized projects.

Our standardized delivery process eliminates roadblocks and delays, so your custom services are up and running as quickly as possible.

Strengthen your culture of safety.

Rely on experts who live and breathe safety and compliance.

Avoid violations and help everyone go home safe. Work with our experts to build a culture of safety, even in the field.

- Navigate local, state and federal regulations that apply to your fleet.
- Evaluate operational policies to align with safety strategies.
- Reduce violations by verifying required inspections and maintaining records properly.
- Modernize how your safety managers' implement and monitor safety strategies.



Prevent incidents and save lives.

Safe driving isn't top of mind for many operators—but it's still essential. Zonar Coach™ prevents incidents and extends the reach of your safety program to smaller, light-duty vehicles. Its HD dual-facing dashcam detects eight key unsafe behaviors, including distracted driving. When it does, operators are alerted to immediately self-correct then and there. Available as a complete, in-cab safety solution, or a standalone smart dashcam.

- Prevent incidents and accidents instead of just analyzing them afterward.
- Protect against false claims and nuclear verdicts by exonerating operators.
- Appropriately answer complaints with vehicle data and on-demand footage.
- Empower operators to own their driving performance on and off the highway.

Meet your eyewitness with more angles.

Add an external-facing, plug-and-play camera to the side or rear to capture more, from more angles. See sideswipes, review rear accidents and confirm if a customer's trash was collected. Installs directly with the vehicle's Zonar DashCam™ device.



Distracted Driving



Speeding



Tailgating



Lane Drifting



Rolling Stops



Hard Cornering



Hard Acceleration



Hard Braking



Drowsy Driving



Collision Warning



Rollover Detection



Panic Button

Trusted by industry leaders.



Two sets of expertise to hear what your Daimler trucks are telling you.

Daimler's best-in-class design combines our innovative analytics hardware and software to transform how you keep vehicles working hard and earning strong. Detroit Connect® Virtual Technician® records before, during and after a fault occurs, giving Detroit engineers a 360-degree diagnostic view to interpret. Standard on select Freightliner and Western Star vehicles.

Lower costs, enhance safety.

Working with our Daimler partners, our proven OEM telematics platform has been extended to enable the Detroit Connect platform with their Analytics service. Use this critical fuel and safety insights to cut costs and improve safety for your Daimler vehicles.

Rich data for International® Trucks, delivered.

Pair International's renowned series of vehicles with our comprehensive data sets for unparalleled vehicle monitoring and maintenance. Use their all-make advanced remote diagnostics solution, OnCommand® Connection, to access comprehensive diagnostic data pulled through the Zonar TCUs across your fleet.

- Access comprehensive diagnostic data pulled through the Zonar V4.
- More efficiently manage your International Trucks from the inside out with rich diagnostic data.

About Zonar

Zonar exists because you deserve better. Student transportation fleets trust us to protect our nation's children every day. Now, we're the trusted leader and clear choice for small to mid-sized businesses, enterprise fleets, and public sector organizations across the Americas. To some, you're one of a million. To us, you're the one in a million. Our proven fleet management solutions help you run better, safer and more efficiently. We help you save more of everything. We work late, push harder and deliver what's needed, faster—for you.

You might not get fired for choosing someone bigger or shinier. But when there's a surprise, you'll want the one who picks up and shows up to help. You call? We answer, 24/7. Whatever size, mix or industry your fleet is, we move at your speed to help solve real-world problems.

Zonar HQ: Seattle, WA. Other locations: Cincinnati, OH, West Chicago, IL & Lakeland, FL. Top priority: You.

zonarsystems.com | info@zonarsystems.com | [\(877\) 843-3847](tel:8778433847)

© Zonar Systems, Inc. All rights reserved.

ZONAR